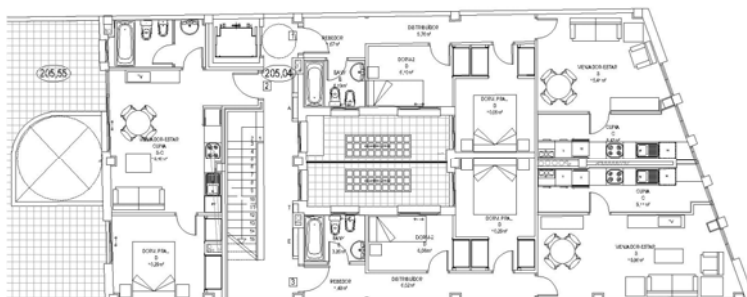


Mutua General de Seguros

Lleida



Two Blocks of Flats and Car Park

Description :

INGENIBO PROJECTS in collaboration with *Bargués Ideas i Projectes*, is working on the Basic and Construction projects. It'll also carry out the Construction Management.

The project's main characteristic is the conservation of the building's façade as it is catalogued.

Technical Characteristics :

- Area: 4.207 m²
- N° of flats: 29
- N° of parking spaces: 20

Date of execution: 2007-2008 (still executing)